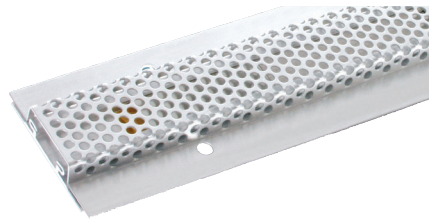


### Cabinet Heater Series P



#### Special Features

- Flat design
- Large contact surface
- The max. achievable power results from a direct screw fixing to an assembly plate
- The touch protection must be mounted to the heater with a spacer of min. 5mm to reduce the temperature
- Optional with touch protection

#### Technical data:

Model	250	240	400	
Rasted power at 10°C (free in air) (W)	70	95	110	
Profile temperature (approx) (°C)	200	200	200	
Max. achievable power with good thermal contact	250	280	300	
Voltage range	110-240V, AC/DC			
Protection class	-			
System of protection	IP20			
Connection cable 2x0,75mm <sup>2</sup> , silicone	500mm long			
Fixing	Fitting holes			
Approvals	VDE, UL, CE			
Dimensions LxWxH (mm)	250x70x18	340x70x18	400x70x18	
Weight (kg)	0.2	0.31	0.38	
Recommended fuse (time-delay)	240V	10A	10A	10A
	110V	6,3A	6,3A	6,3A

